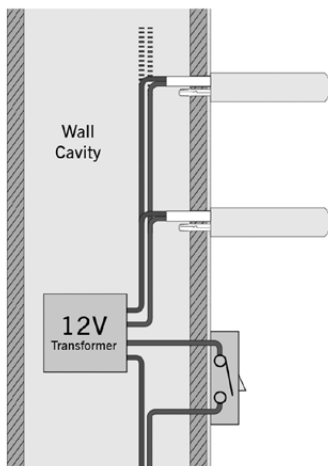
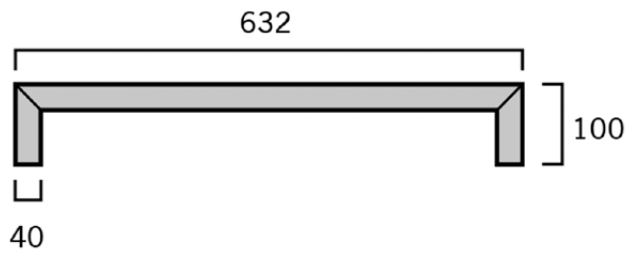
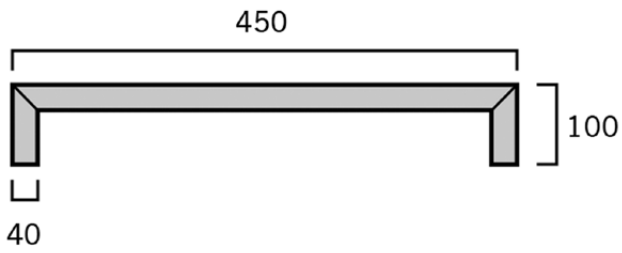
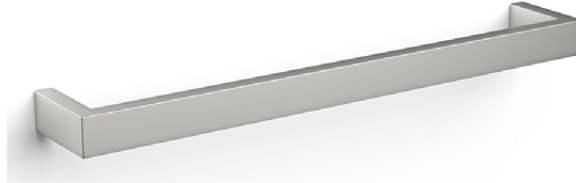


Claybrook.

ALTAR

Heated Towel Rail

SQUARE CLOSED



If you require any further assistance regarding specification data and technical advice please contact us at enquiries@claybrookstudio.co.uk



Claybrook.

ALTAR

Care and Maintenance Instructions

IMPORTANT NOTES:

Please Read Carefully & retain these instructions for Future Reference.

General Product Notes

Altar Electric Heated Towel Rail 450

450mm wide x 40mm high x 100mm deep

Dry electric.

Easy to fit using the mounting kit included.

Material is Stainless Steel.

Available in Polished Stainless Steel, Brushed Stainless Steel, Matt Black, Polished Brass, Brushed Brass, Rose Gold Finishes.

Supplied with all fixtures and fittings.

All components use British standard fittings.

Safe in Zones 2 and 3, IPX4 Rated, low voltage electric only.

Tested to BS EN 442 standards

You will need to purchase 1 Altar transformer for every 3 bars. For further information and to order see 'you may need' tab below this product

Output, Watts 17 per bar

3 Year guarantee.

Altar Electric Heated Towel Rail 630

632mm wide x 40mm high x 100mm deep

Dry electric.

Easy to fit using the mounting kit included.

Material is Stainless Steel.

Available in Polished Stainless Steel, Brushed Stainless Steel, Matt Black, Polished Brass, Brushed Brass, Rose Gold Finishes.

Supplied with all fixtures and fittings.

All components use British standard fittings.

Safe in Zones 2 and 3, IPX4 Rated, low voltage electric only.

Tested to BS EN 442 standards

You will need to purchase 1 Altar transformer for every 3 bars. For further information and to order see 'you may need' tab below this product

Output, Watts 23 per bar

3 Year guarantee.

Altar 12V Transformer

Dry electric.

Safe in Zones 2 and 3, IPX4 Rated, low voltage electric only.

You will need to purchase 1 transformer for every 3 x 450mm bars and 1 transformer for every 2 x 630 bars being used. For further information and to order see 'you may need' tab below this product

For use with, Watts 10-60.

3 Year guarantee.

If you require any further assistance regarding specification data and technical advice please contact us at enquiries@claybrookstudio.co.uk 020 7052 1555



ALTAR

Care and Maintenance Instructions

MODEL	FINISH	HEIGHT (mm)	LENGTH (mm)	OUTPUT (watts)
Altar	Stainless Steel	40	450	17
Altar	Stainless Steel	40	632	23
Altar 12v Transformer				10 to 60

IMPORTANT NOTES:

USE:

General Care & Maintenance

Provided this product is installed & used in accordance with the instructions, problems should not arise. However, should maintenance be required it should be carried out by a competent person with reference to the instructions. Before any work is carried out the root cause of the problem must be identified.

Under normal circumstances, towel rail surfaces are highly durable however small scratches / marks may occur, if the rail is a Polished Finish these can generally be polished out using a specialist Stainless Steel Metal Polish. If your rail is a Satin or Black Finish please contact us for advice before attempting to polish out any small scratches / marks.

Cleaning

We recommend using a Micro-Fibre Cloth designed for use on Stainless Steel. All that is needed to clean the products is water. Under no circumstances use abrasive, caustic or scouring products as these may adversely affect the finish of the rail. Avoid using chemical cleaners on nearby surfaces such as chemical Tile Cleaners etc as these may cause damage. Limescale ~ should a build-up of limescale occur, it can usually be removed using a 50:50 solution of white vinegar & water applied with a soft cloth & rinsed / dried thoroughly afterwards.

Guarantees

See General Product Notes. Guarantees in all cases are subject to the products being installed in accordance with British standards as well as those directed by the installation instructions. The guarantee in all cases is restricted to a free of charge replacement or repair of the failed product only.

Claybrook Studio Ltd liability will under no circumstances extend beyond the repair or replacement of the product. Claims for either labour to replace the product or damage to property are not admissible.

Spares

Spares can be ordered and purchased from Claybrook Studio should you require replacement parts.

Print colours may vary from original.

If you require any further assistance regarding specification data and technical advice please contact us at enquiries@claybrookstudio.co.uk

