

Claybrook.

CHATEAU

This wonderful rustic style stone effect porcelain is extremely lifelike and impressive. In charming colour options and in smaller sizes it creates the feel of natural materials.

3 COLOURS / 1 FINISH / 3 FORMATS / 2 EDGES

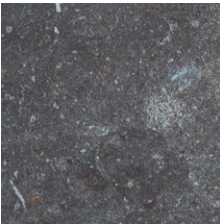


Chateau Villandry Vintage edge Square and Rectangle



Chateau Cheverny 40x80 Rectified edge

COLOURS



Villandry



Chantilly

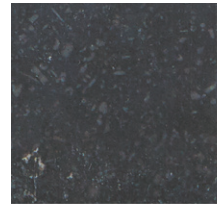


Cheverny

EDGE



Vintage



Rectified

FORMAT	SIZE (mm)	THICKNESS (mm)	FINISH	COLOURS	RECOMMENDED GROUT WIDTH (mm)	BOX QTY
Square Vintage edge	197 x 197	10	Unglazed Porcelain	All	6	10
Rectangle Vintage edge	197 x 303	10	Unglazed Porcelain	All	6	12
Rectangle Rectified edge	397 x 797	10	Unglazed Porcelain	All	3	3



Shade Variation / V3 - Moderate



Slip Rating / R10 *



Material / Unglazed Porcelain



Requires Sealing / No

Print colours may vary from actual product, so tile samples should be requested before ordering. For advice on shade variation of V3 and above, please speak to our showroom.

* A ramp slip rating (R) value where quoted, is determined from tests carried out on one batch and the result can vary from batch to batch. Please contact technical@claybrookstudio.co.uk for further information.



Claybrook.

CHATEAU

Installation and Technical Advice

Planning & Layout - all substrates should be flat, sound and dust free. All wet areas need to be suitably tanked and if the tiles are being fixed to stud walls or joist floors, then all movement must be made absolute minimal using suitable plywood or cement board.

Cutting advice - use a water-cooled tile cutter and plan the tile layout to avoid cuts less than 15mm where possible. Always cut through the tile with the visible face uppermost and tidy any slight chipping with a rubbing/sanding stone. Ensure the blade is kept clean with a keen cutting edge, otherwise excess chipping will occur. **The Vintage edge on the 20x20cm and 20x30cm tile has been created by grinding the edge at the factory, whilst the 40x80cm tile has a rectified straight-cut edge. Please bear this in mind when cutting.**

Sealing & Grouting advice - no sealer required. To avoid excessive grout residue, we recommend using our Ardex FL format grout which has been tested with our products, and is available to purchase online. We do not recommend using contrasting-coloured or fine grouts for joint widths down to 1mm, as these can cling to the surface making the tiles more difficult to clean-down after grouting.

Ongoing Maintenance – We recommend using EcoProtec's Stone and Porcelain Aftercare Cleaner for daily cleaning purposes, as this will not affect the tile's slip rating and will not attack the surface of the grout. For an occasional deeper clean, you can use EcoProtec's Stone and Tile Intensive Cleaner. The tile does not need re-sealing.

For further advice on installation please contact technical@claybrookstudio.co.uk with any questions.

TECHNICAL DATA	INDUSTRY STANDARD	REQUIREMENT	PRODUCT VALUE
Length and Width	BS UNI ENISO 10545-2	0.6% +/- 2mm	0.15%
Thickness	BS UNI ENISO 10545-2	0.5% +/- 0.5mm	5%
Edge Straightness	BS UNI ENISO 10545-2	0.3% +/- 1.5mm	0.10%
Rectangularity	BS UNI ENISO 10545-2	0.5% +/- 2mm	0.2%
Surface Flatness	BS UNI ENISO 10545-2	0.5% +/- 2mm	0.35%
Surface Appearance (% of surface free of flaws)		≥95%	>95%
Water Absorption	BS UNI ENISO 10545-3	≤0.5%	0.04%
Breaking Strength	BS UNI ENISO 10545-4	≥35N/mm ²	53N/mm ²
Resistance to Abrasion	BS UNI ENISO 10545-7	≥175 mm ³	>128mm ³
Thermal Shock Resistance	BS UNI ENISO 10545-9	Pass	Pass
Frost Resistance	BS UNI ENISO 10545-12	No alteration to surface	No alteration
Chemical Resistance (domestic)	BS UNI ENISO 10545-13	UB min	UA ULA UHA
Stain Resistance (domestic)	BS UNI ENISO 10545-14	Declared value	Class 5

If you require any further assistance regarding specification data, technical advice or samples, please contact enquiries@claybrookstudio.co.uk or technical@claybrookstudio.co.uk

