

Claybrook.

DIAVOLETTI

The distinctive design across the four colourways is rather like authentic Venetian Terrazzo, with small decorative flakes or chips set against the beautiful base shades.

4 COLOURS / 1 FINISH / 1 FORMAT



Diavoletti Mint



Diavoletti Mango, Moka and Mint

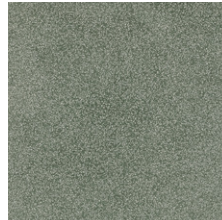
COLOURS



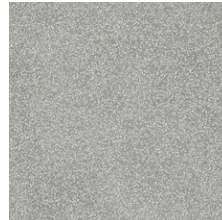
Mango



Moka



Mint



Melon

FORMAT	SIZE (mm)	THICKNESS (mm)	FINISH	COLOURS	RECOMMENDED GROUT WIDTH (mm)	BOX QTY
Square	600 x 600	9	Porcelain	All	3	4

Print colours may vary from actual product, so tile samples should be requested before ordering. For advice on shade variation of V3 and above, please speak to our showroom.

* A ramp slip rating (R) and/or PTV Slider 96/55 value where quoted, are determined from tests carried out on one batch and the result can vary from batch to batch. Please contact technical@claybrookstudio.co.uk for further information.



Claybrook.

DIAVOLETTI

Installation and Technical Advice



Shade Variation / V2 - Slight



Slip Rating / R10 A+B | PTV 36+ Shod



Material / Porcelain



Requires Sealing / No

Recycled Content / 40%

Planning & Layout - All substrates should be flat, sound and dust free. All wet areas need to be suitably tanked and if the tiles are being fixed to stud walls or joist floors, then all movement must be made absolutely minimal using suitable plywood or tile backer board. If planning to brick-bond tiles, please use tile levelling clips to minimise any bowing.

Cutting Advice - Always use a water-cooled tile cutter and plan the tile layout to avoid cuts of less than 15mm where possible. Always cut through the tile with the visible face uppermost and tidy any slight chipping with a rubbing/sanding stone. Ensure the blade is kept clean with a keen, sharp cutting edge, otherwise excess chipping will occur.

Sealing & Grouting Advice - No sealer required. To avoid excessive grout residue, we recommend using our Ardex FL format grout which has been tested with our products and is available to purchase online. We do not recommend using contrasting-coloured or fine grouts for joint widths down to 1mm, as these can cling to the surface making the tiles more difficult to clean-down after grouting.

Ongoing Maintenance - We recommend using EcoProtec's Stone and Porcelain Aftercare Cleaner for daily cleaning purposes, as this will not affect the tile's slip rating and will not attack the surface of the grout. For an occasional deep clean, you can use EcoProtec's Stone and Tile Intensive Cleaner. The tile does not need re-sealing.

For further advice on installation please contact technical@claybrookstudio.co.uk with any questions.

TECHNICAL DATA	INDUSTRY STANDARD	REQUIREMENT	PRODUCT VALUE
Length and Width	BS UNI ENISO 10545-2	0.6% +/- 2mm	>0.6%
Thickness	BS UNI ENISO 10545-2	5% +/- 0.5mm	≤ 5%
Edge Straightness	BS UNI ENISO 10545-2	0.5% +/- 1.5mm	>0.5%
Rectangularity	BS UNI ENISO 10545-2	0.5% +/- 2mm	>0.5%
Surface Flatness	BS UNI ENISO 10545-2	0.5% +/- 2mm	>0.5%
Surface Appearance (% of surface free of flaws)		≥95%	≥95%
Water Absorption	BS UNI ENISO 10545-3	≤0.5%	>0.05%
Breaking Strength	BS UNI ENISO 10545-4	≥35N/mm ²	≥50N/mm ²
Resistance to Abrasion	BS UNI ENISO 10545-7	≥175mm ³	>145mm ³
Linear Thermal Shock Expansion	BS UNI ENISO 10545-8	No provision	≥ 7.10(-6) Centigrade -1
Frost Resistance	BS UNI ENISO 10545-12	No alteration to surface	No alteration
Chemical Resistance (domestic)	BS UNI ENISO 10545-13	UB min	LA, HA
Stain Resistance (domestic)	BS UNI ENISO 10545-14	Declared value	Class 5

If you require any further assistance regarding specification data, technical advice or samples, please contact enquiries@claybrookstudio.co.uk or technical@claybrookstudio.co.uk

