

Claybrook.

MILAZZO

Texture is such a fun element to add to a tile. Alongside the usable colours and elegant size, the finish of Milazzo makes for a heady but perfect combination. Made in Italy the tiles will be great for adding a bit of visual interest to any scheme.

4 COLOURS / 1 FINISH / 2 DECORS

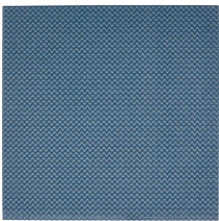


Milazzo Marcu Decor 2

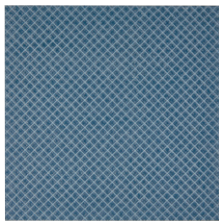


Milazzo Cataldo Decor 1

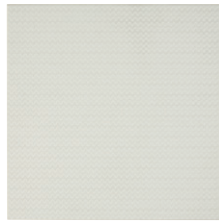
DECORS



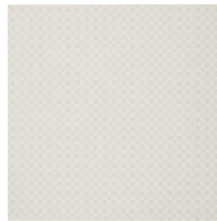
Marcu Decor 1



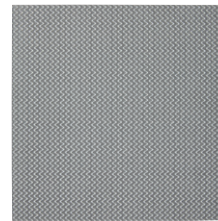
Marcu Decor 2



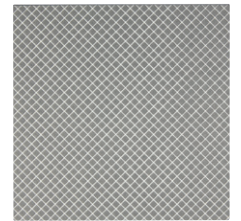
Augustu Decor 1



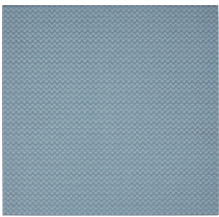
Augustu Decor 2



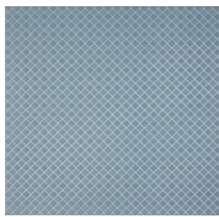
Cataldo Decor 1



Cataldo Decor 2



Giovi Decor 1



Giovi Decor 2

FORMAT	SIZE (mm)	THICKNESS (mm)	FINISH	COLOURS	RECOMMENDED GROUT WIDTH (mm)	BOX QTY
Decor 1	200 x 200	10	Glazed Porcelain	All	3	9
Decor 2	200 x 200	10	Glazed Porcelain	All	3	9



Shade Variation / V3 - Moderate



Slip Rating / R10



Material / Glazed Porcelain



Requires Sealing / No

* A ramp slip rating (R) value where quoted, is determined from tests carried out on one batch and the result can vary from batch to batch. Please contact technical@claybrookstudio.co.uk for further information.



Claybrook.
MILAZZO

Installation and Technical Advice

Planning & Layout - all substrates should be flat, sound and dust free. All wet areas need to be suitably tanked and if the tiles are being fixed to stud walls or joist floors, then all lateral movement must be made absolutely minimal using suitable plywood or cement board. The Milazzo tiles can vary in size by +/- 1.5 mm, so please check sizes before installing and allow the recommended grout joint.

Cutting advice - use a water-cooled tile cutter and plan the tile layout to avoid cuts less than 15mm where possible. Always cut through the tile with the visible face uppermost and tidy any slight chipping with a rubbing/sanding stone. Ensure the blade is kept clean with a keen cutting edge, otherwise excess chipping will occur.

Sealing & Grouting advice - no sealer required. To avoid excessive grout residue, we recommend using our Ardex FL format grout which has been tested with our products, and is available to purchase online. We do not recommend using contrasting-coloured or fine grouts for joint widths down to 1mm, as these can cling to the surface making the tiles more difficult to clean-down after grouting.

For further advice on installation please contact technical@claybrookstudio.co.uk with any questions.

Print colours may vary from actual product, so tile samples should be requested before ordering.
For advice on shade variation of V3 and above, please speak to our showroom.
If you require any further assistance regarding specification data, technical advice or samples,
please contact enquiries@claybrookstudio.co.uk or technical@claybrookstudio.co.uk

