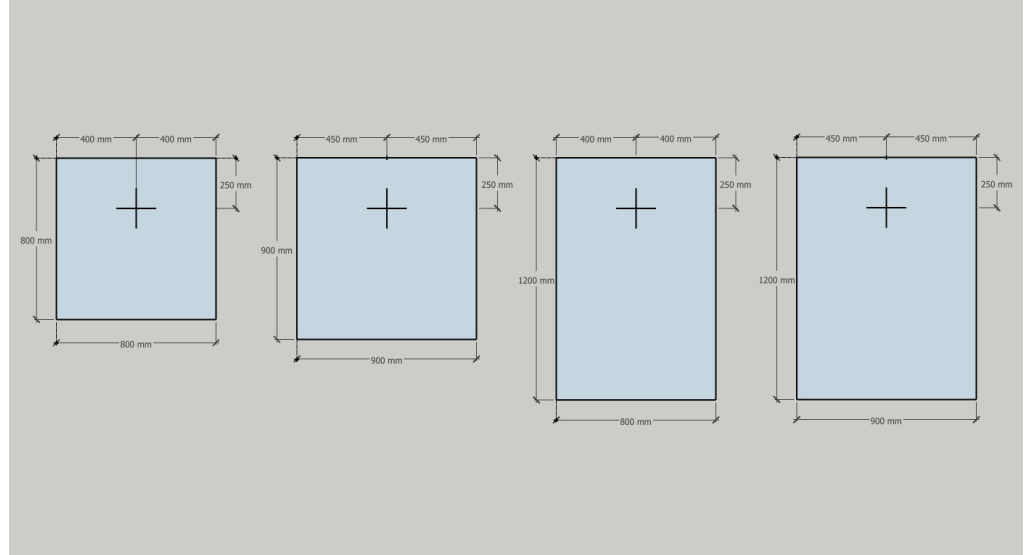
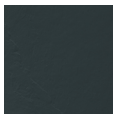


# PORTLAND SHOWER TRAY

## Product Technical Sheet



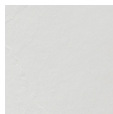
### COLOUR:



Grey/Black



Grey



Matt White

### WASTE:



Grey/Black

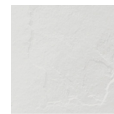


Grey



Matt White

### TEXTURE:



Slate

### Characteristics

Composite shower tray with layer of gel coat

Ecological polyester resin with minerals

Colour throughout

High water resistance, protection from discolouration by UVA rays resistance to chemical agents

### Product Standards

Standard Drain CE. UNE-EN 274

Non-Slip DIN 51097:1992 . Class B

Non-Slip UNE – EN 12633. Class III

Resistance to the proliferation of bacteria

### TECHNICAL SPECIFICATIONS ACRYMOLD – SOLID SURFACE

**Composition:** Solid material for surfaces, non-porous and homogeneous, manufactured by mixing 1/3 of resin-modified polyester with polymethyl methacrylate (PMMA) and 2/3 of natural minerals.

The main ingredients is the alumina trihydrate (ATH) mineral, a bauxite derivative, used as the base for the aluminium production.

The colour is the matt white and the material structure is homogeneous in all its thickness and it is not damaged nor becomes detached, it can be united without visible joints.

Surfaces are renewable they can be perfectly restored with an abrasive detergent and a scourer. This way, for example, burns of cigarettes are easily removed. Damages caused by an inappropriate use can be easily repaired in situ, and there is no need to replace the whole piece.

As solid surface is a non-porous material, it is hygienic and does not allow the development of any mould, bacteria into the joints, nor under surface. It is an inert and innocuous material under normal temperature conditions and there is no gas emission.

If you require any further assistance regarding specification data and technical advice please contact us at [enquiries@claybrookstudio.co.uk](mailto:enquiries@claybrookstudio.co.uk)



Part No.	Code
1	L-ST90NT10-70-3H (Leaflet)
2	P-5MM-INSERT
3	P-C-ST90-5034L (Carton)
4	P-M5X40-PZCSK
5	P-OR-055.00-2.00
6	P-SPW-100-075-02+3H
7	P-STW90RING-SL
8	STW90-RW-12.5MM
9	STW9034T/B3H-SPIN
a	SPINWELD
b	STW90-LID-3H
c	STW9034TRAPBDY
10	STW90WASTE-3H-50GR
11	STWBEND-MF-SUB
a	PWM2
b	RW2
c	RWM2
d	STWBENDBODY-MF
i	T8A
e	T8M
12	TSGHOOK-STEEL

## 50mm Water Seal