

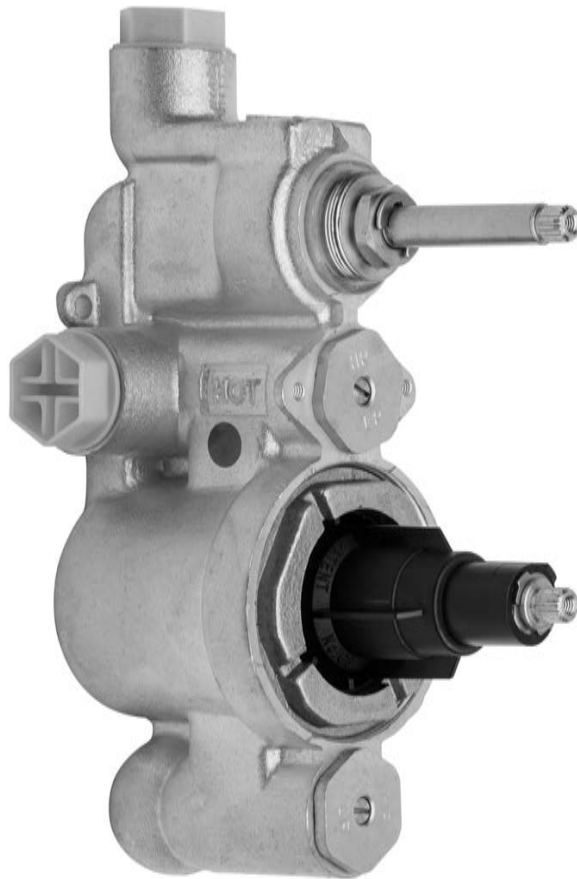


# Claybrook.

**PRODUCT DATA SHEET**

**SHO-CON-1OT-RPT** (VCS134-IS) Rough  
parts for concealed thermostatic valve 1 outlet

---



**REFER TO FITTING DEPTHS PRIOR TO  
INSTALLATION**



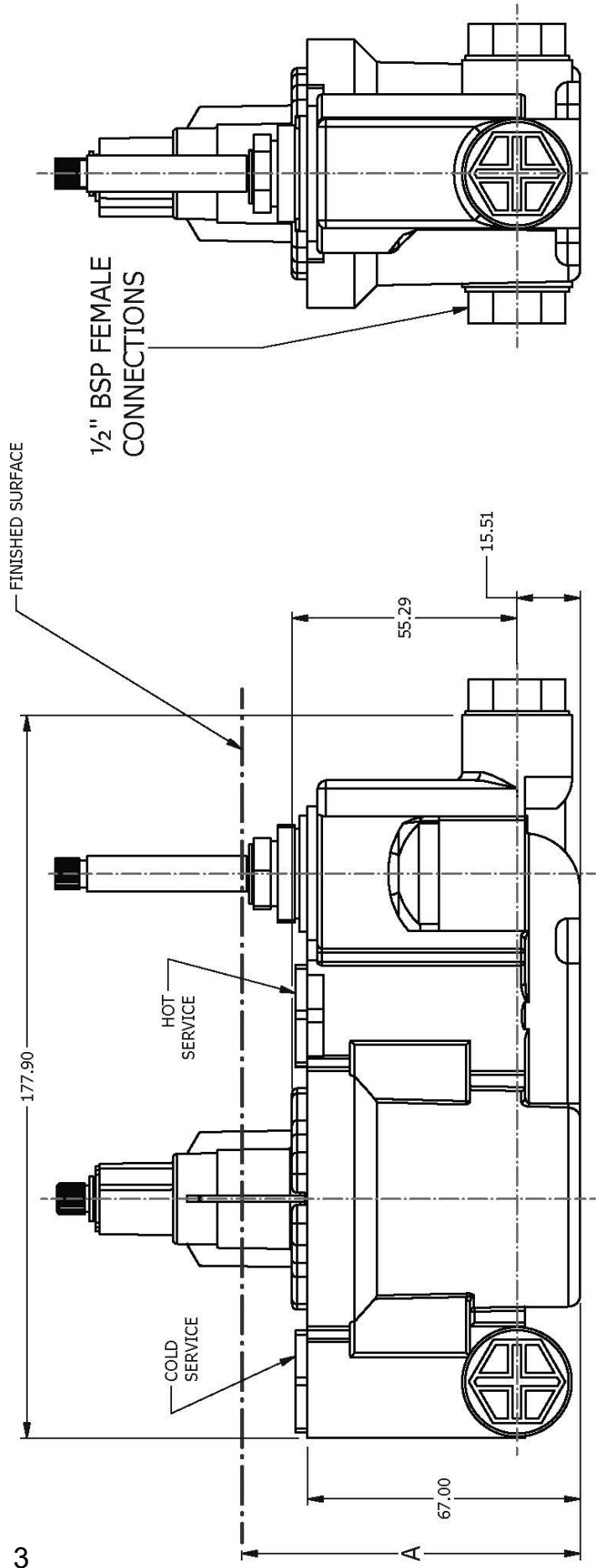
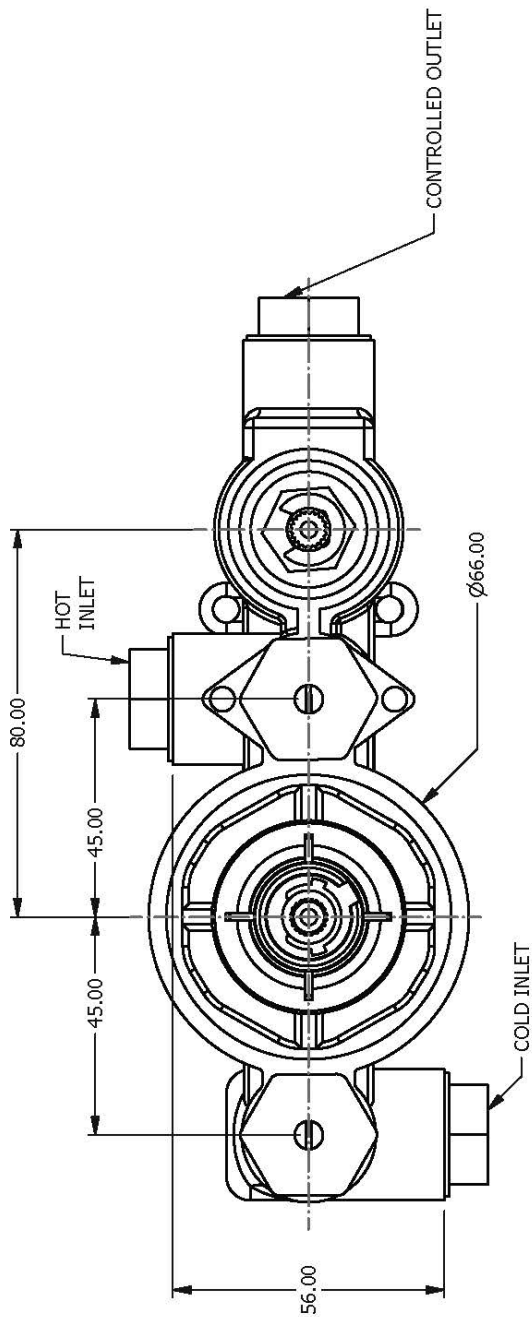
# Claybrook.

<b>Dimension “A”</b>	
<u>Trim Set</u>	<u>Range from Valve to base (mm)</u>
Brooklyn VCS201-T..	73.30 to 84.60
Belmont VCS601-T..	71.80 to 82.80



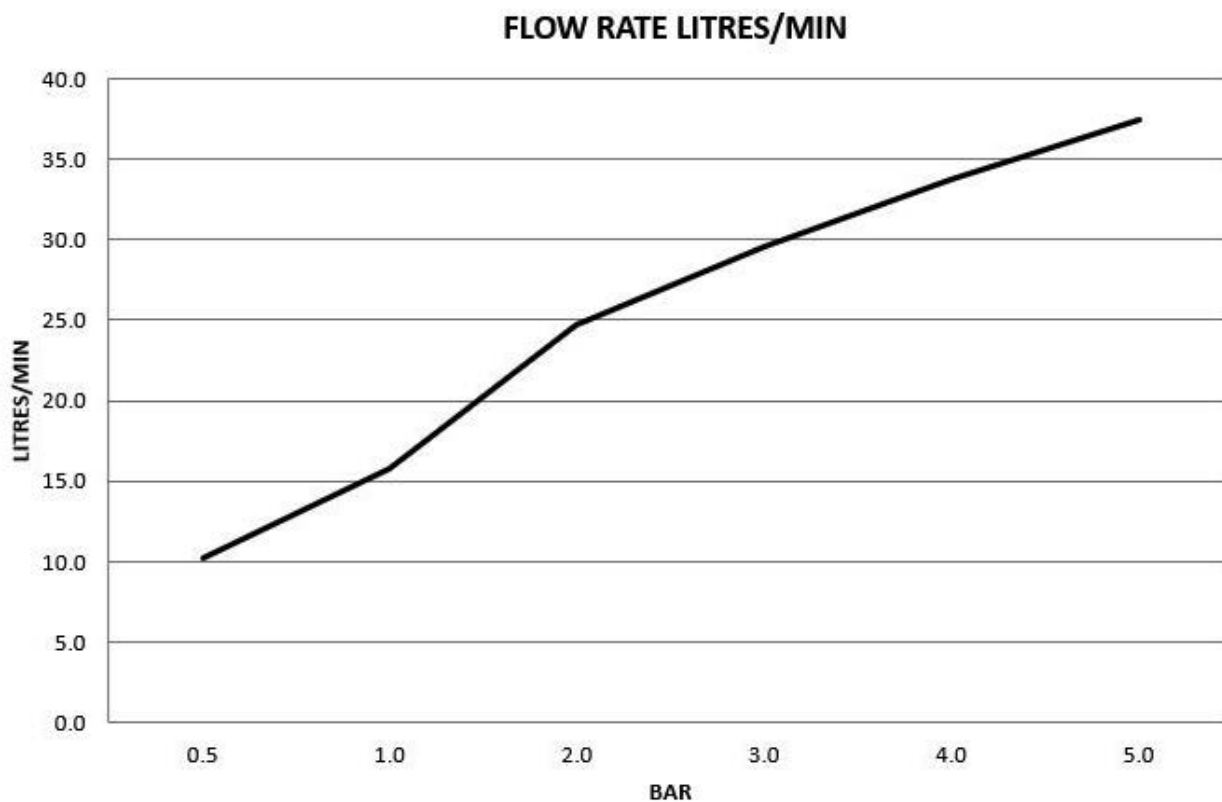
# Claybrook.

**Note:** For the correct installation depths ("A") please see tables on page 2 as they may differ per trim set.





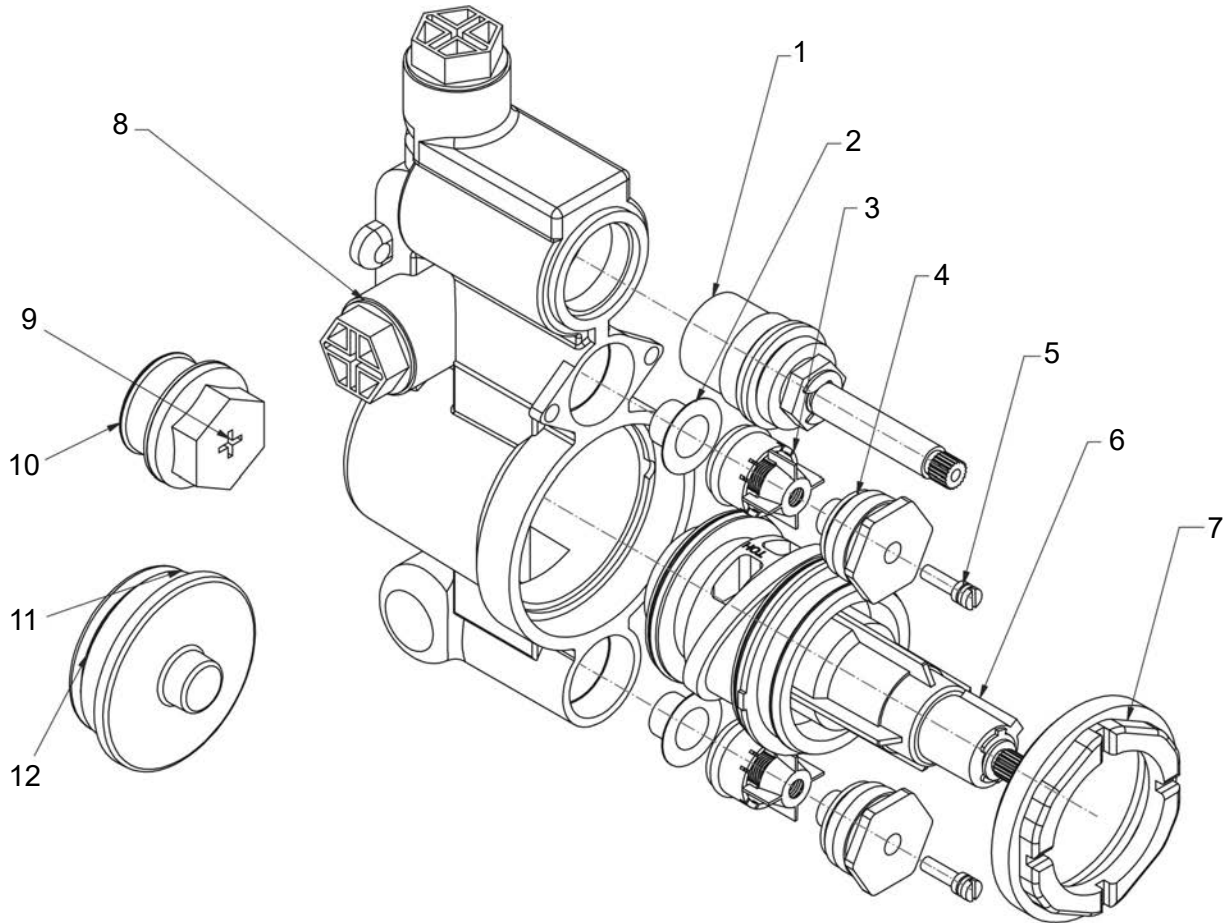
# Claybrook.



The flow rate data provided in this document is indicative of each product and is given in an open outlet condition. Installation design, external connections and fittings not supplied may affect the data provided.

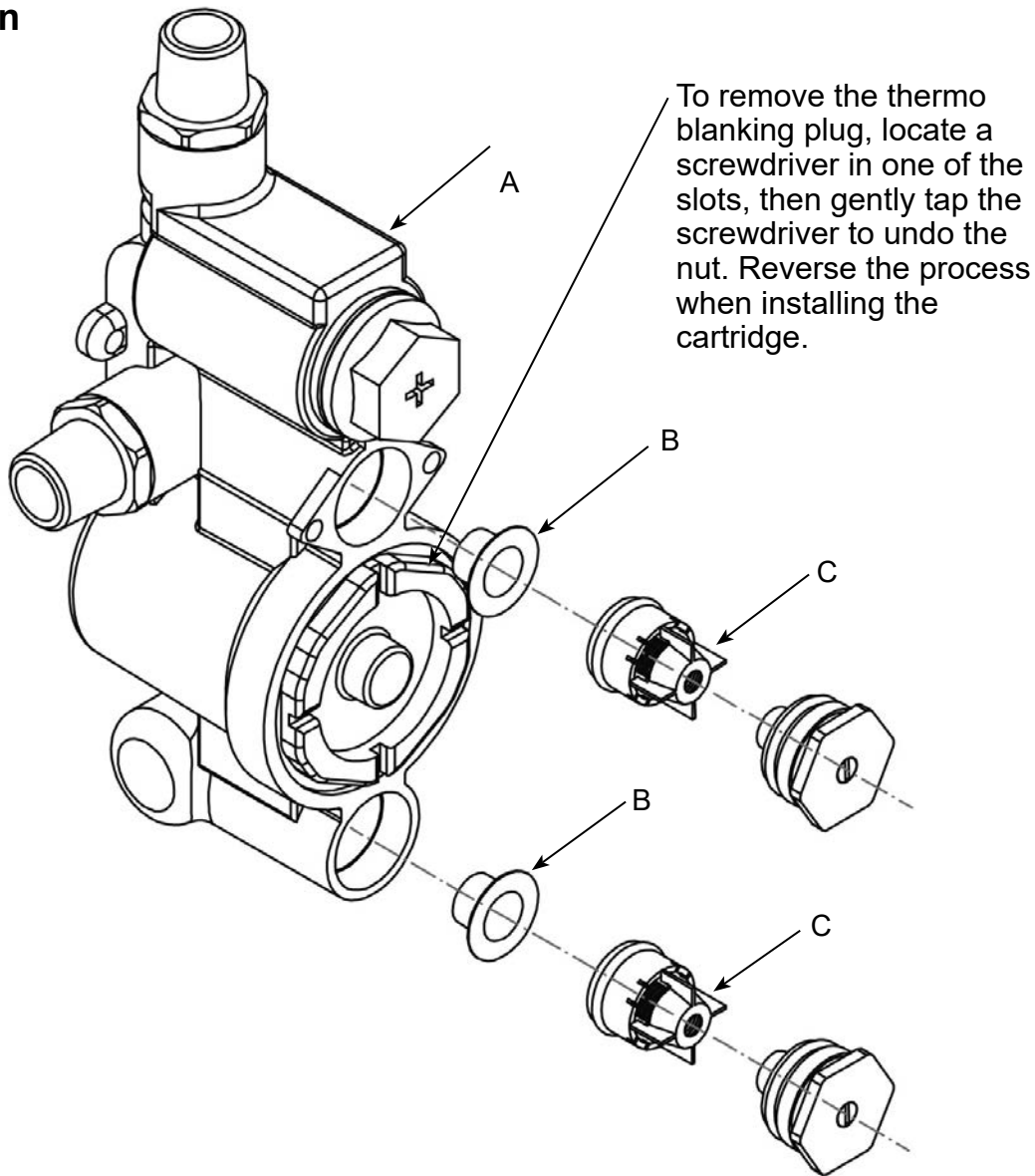


# Claybrook.



Item	Part No.	Description
1	-	CD Valve (Clockwise Closing)
2	-	Filter
3	-	Check Valve
4	-	Service Nut
5	-	Adjustment Screw
6	-	Thermostatic Cartridge
7	-	Retaining Nut
8	-	Hot Inlet (Cold Other Side)
9	-	Blanking Cap
10	-	O-Ring
11	-	O-Ring
12	-	BSP Plug

## Installation

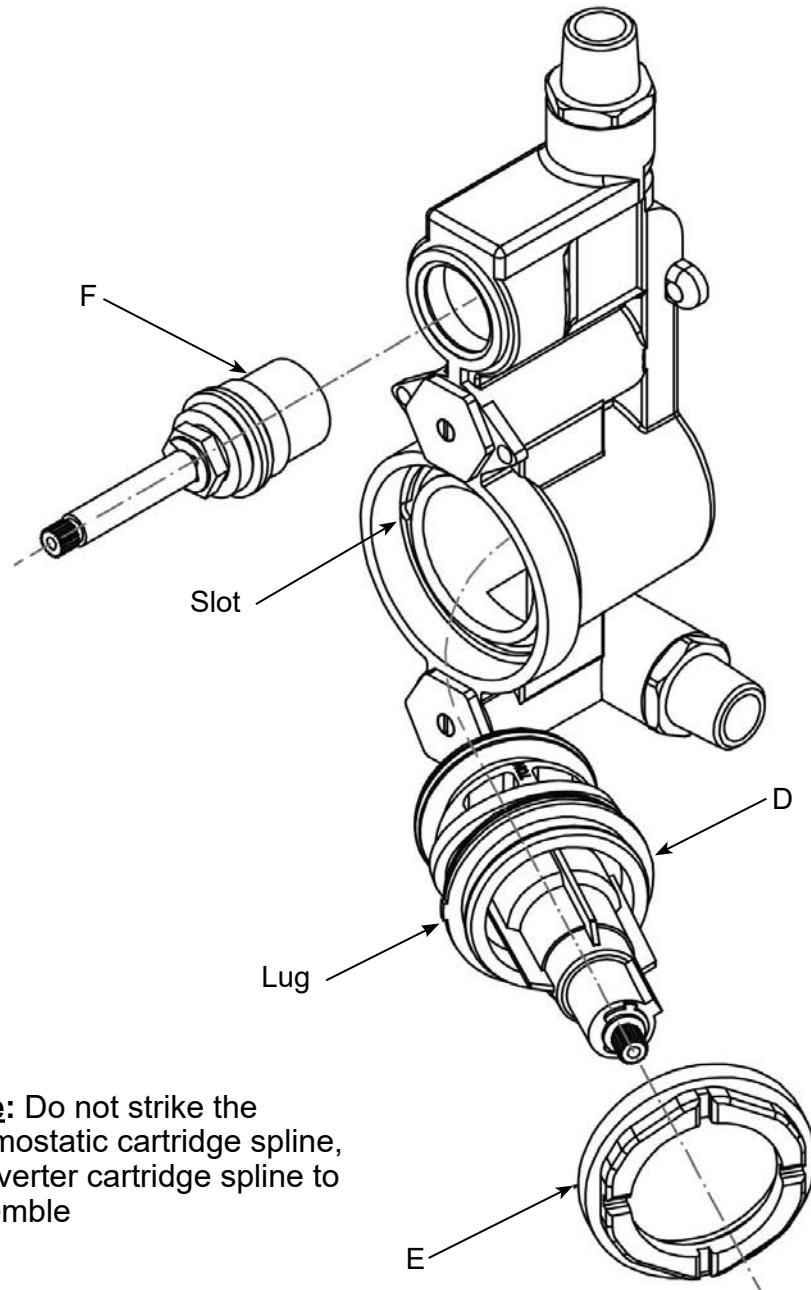


1. Ensuring that the fitting depths at the front of this booklet are met for the appropriate trim set, install the valve (A) to the pipework in the desired location, and secure to a suitable area using screws (not provided). Make sure all pipework is securely clipped.
2. Before flushing the system, and with the hot and cold supplies off, remove the hot and cold filters (B) and check valves (C).
3. Ensure system flushing is carried out below 2 BAR.
4. After flushing the system, once again turn off the supplies and replace the filters (B) and check valves (C) - ensure check valves and filters are re-installed in the shown orientation.

**Note:** To pressure test the system, replace the blanking caps with the cartridges (D & F) provided.



# Claybrook.



**Note:** Do not strike the thermostatic cartridge spline, or diverter cartridge spline to assemble

5. Insert the temperature cartridge (D) into the valve (A) ensuring that the cartridge lug sits in the slot as shown.
6. Lock cartridge in place by using locking nut (E).
7. Screw in volume cartridge (F).



# Claybrook.

## IMPORTANT NOTES

1. Installation should be carried out by a competent engineer, in accordance with water regulations.
2. Before installation, ensure supply pipes are flushed clean. Debris or loose particles will affect the efficiency of the ceramic disc cartridge.
3. For mixer taps, it is recommended that hot & cold pressures are equally balanced.
4. To help maintain the high quality finish, please clean with a soft damp cloth. Do not use abrasive polish or cleaners. Stains may be removed using undiluted washing up liquid.
5. Ceramic cartridges in hard water areas. To prolong the lifespan and reduce servicing periods of your tap we recommend that a suitable water softener be fitted. Consult your installer/designer for details.
6. Please note that as with all tap and shower ware it will be necessary from time to time for the products to be serviced, this should be carried out by a qualified Plumbing Engineer.

**Claybrook  
123 Curtain Road  
Shoreditch  
London  
EC2A 3BX**

**Tel: 020 7052 1555**

8-4033-IS-CS