



# Claybrook.

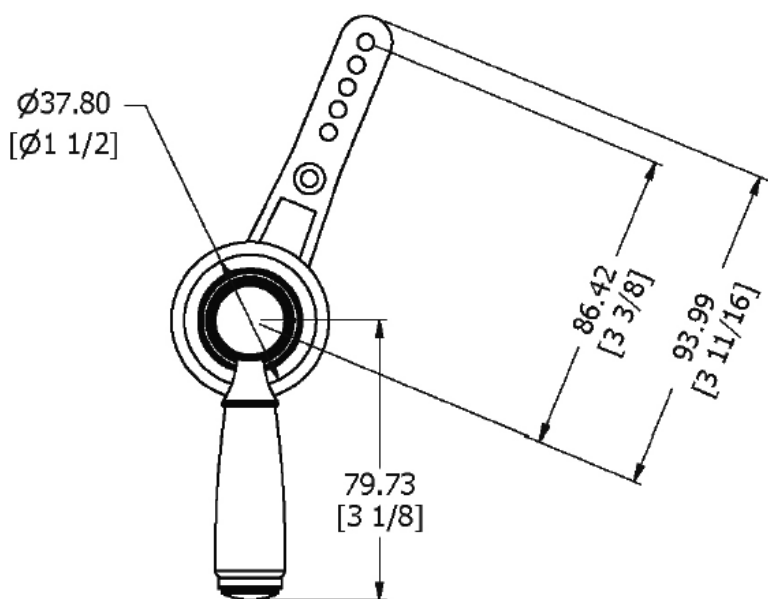
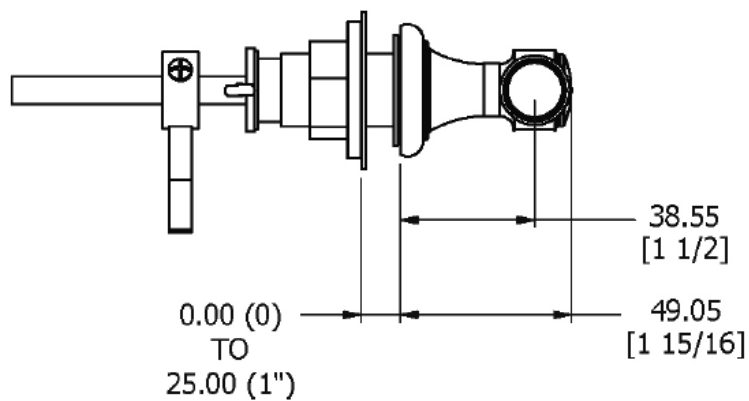
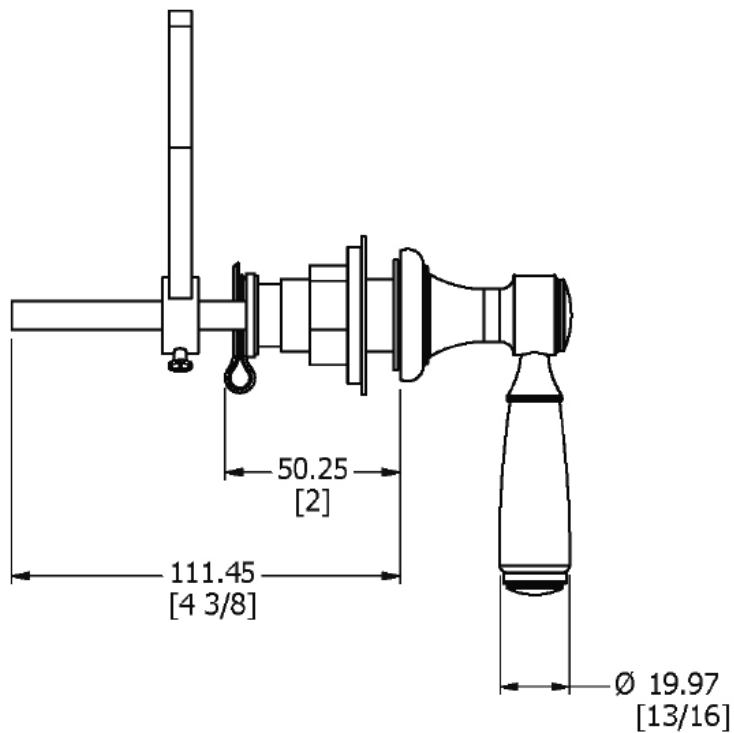
**PRODUCT DATA SHEET**

**TOI-BRO-FLU-HDL** (VCS277) Concealed  
cistern lever metal

---

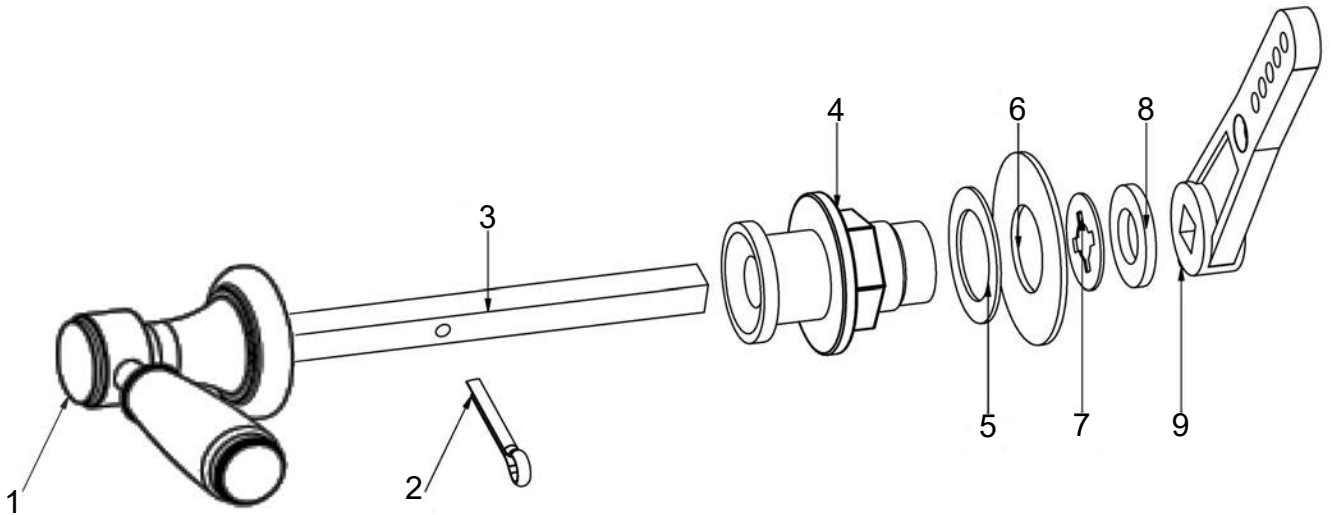


# Dimension Key



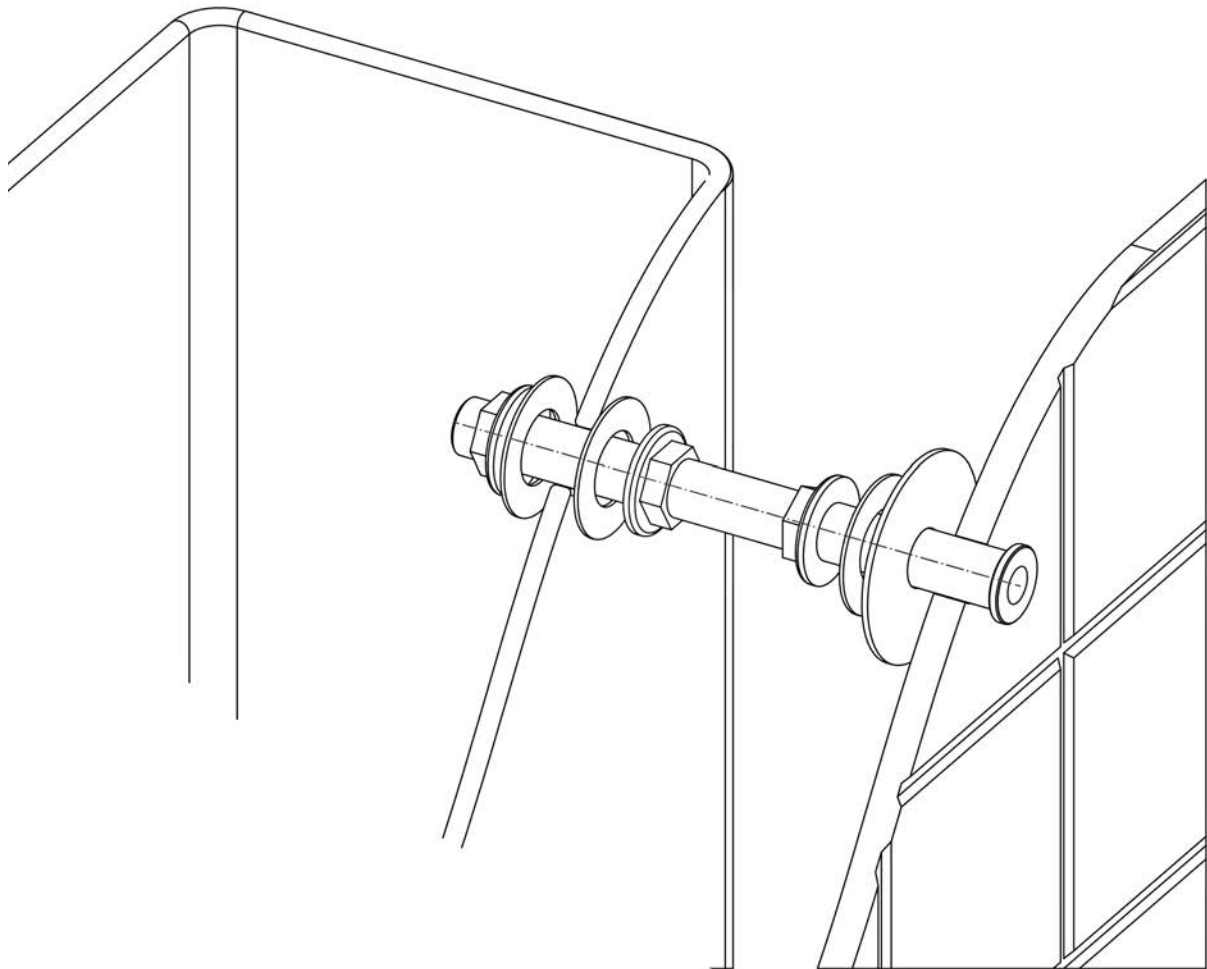


# Claybrook.



Item	Part No.	Description
1	-	Lever Assembly
2	-	Cotter Pin
3	-	Rod
4	-	Back Nut
5	-	Spacer Washer A
6	-	Rubber Washer
7	-	Spacer Washer B
8	-	Brass Washer
9	-	Lifter Arm

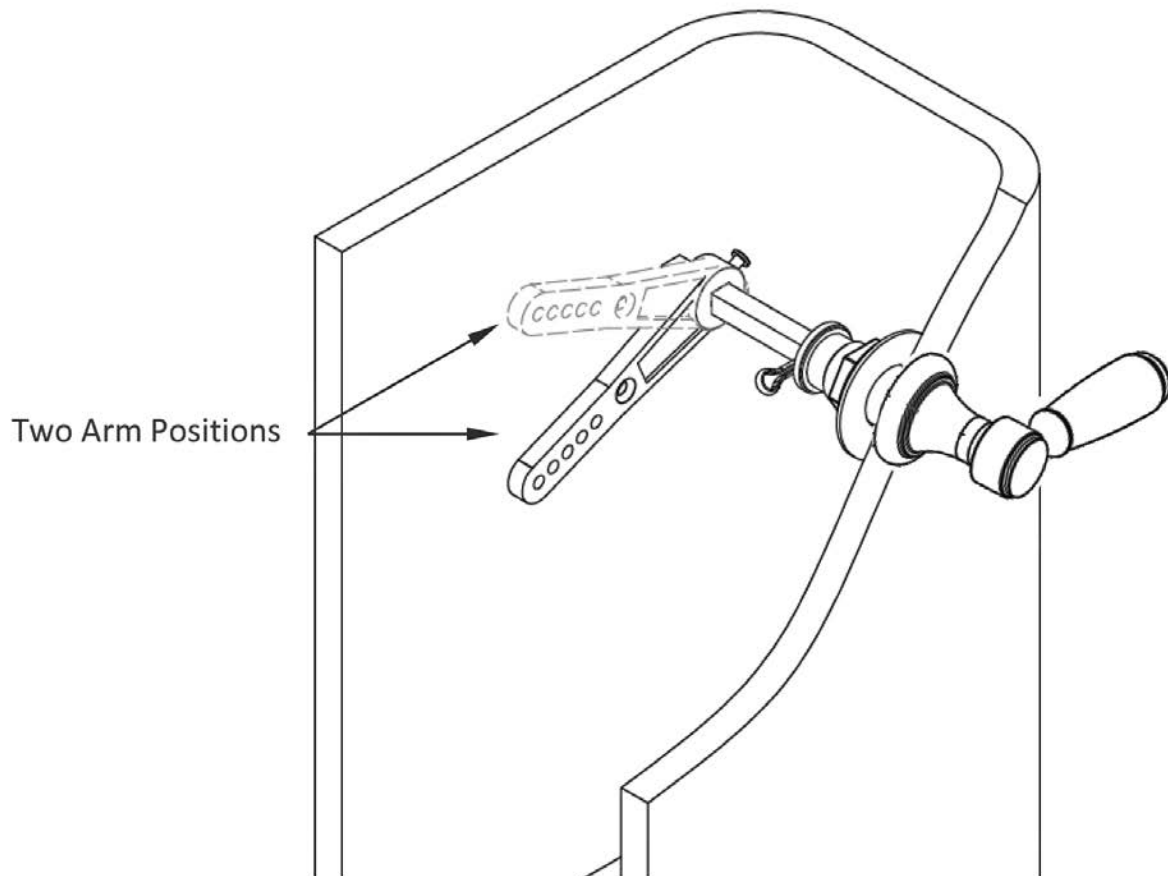
# Claybrook.



1. Pass the threaded sleeve through the cistern. Ensure “spacer washer A” is on the outside of the cistern.
2. Assemble the back-nut, threaded sleeve and rubber washer to the cistern.
3. Pass the lever assembly through spacer washer a and the threaded sleeve.



# Claybrook.



4. Assemble the brass washer & “spacer washer B” onto the spindle and retain using cotter pin.
5. Assemble the lifter arm onto the spindle and secure with locking screw. The lifter arm can be assembled in two positions.



# Claybrook.

## IMPORTANT NOTES

1. Installation should be carried out by a competent engineer, in accordance with water regulations.
2. Before installation, ensure supply pipes are flushed clean. Debris or loose particles will affect the efficiency of the ceramic disc cartridge.
3. For mixer taps, it is recommended that hot & cold pressures are equally balanced.
4. To help maintain the high quality finish, please clean with a soft damp cloth. Do not use abrasive polish or cleaners. Stains may be removed using undiluted washing up liquid.
5. Ceramic cartridges in hard water areas. To prolong the lifespan and reduce servicing periods of your tap we recommend that a suitable water softener be fitted. Consult your installer/designer for details.
6. Please note that as with all tap and shower ware it will be necessary from time to time for the products to be serviced, this should be carried out by a qualified Plumbing Engineer.

**Claybrook  
123 Curtain Road  
Shoreditch  
London  
EC2A 3BX**

**Tel: 020 7052 1555**

8-40026-CS