



Claybrook.

PRODUCT DATA SHEET

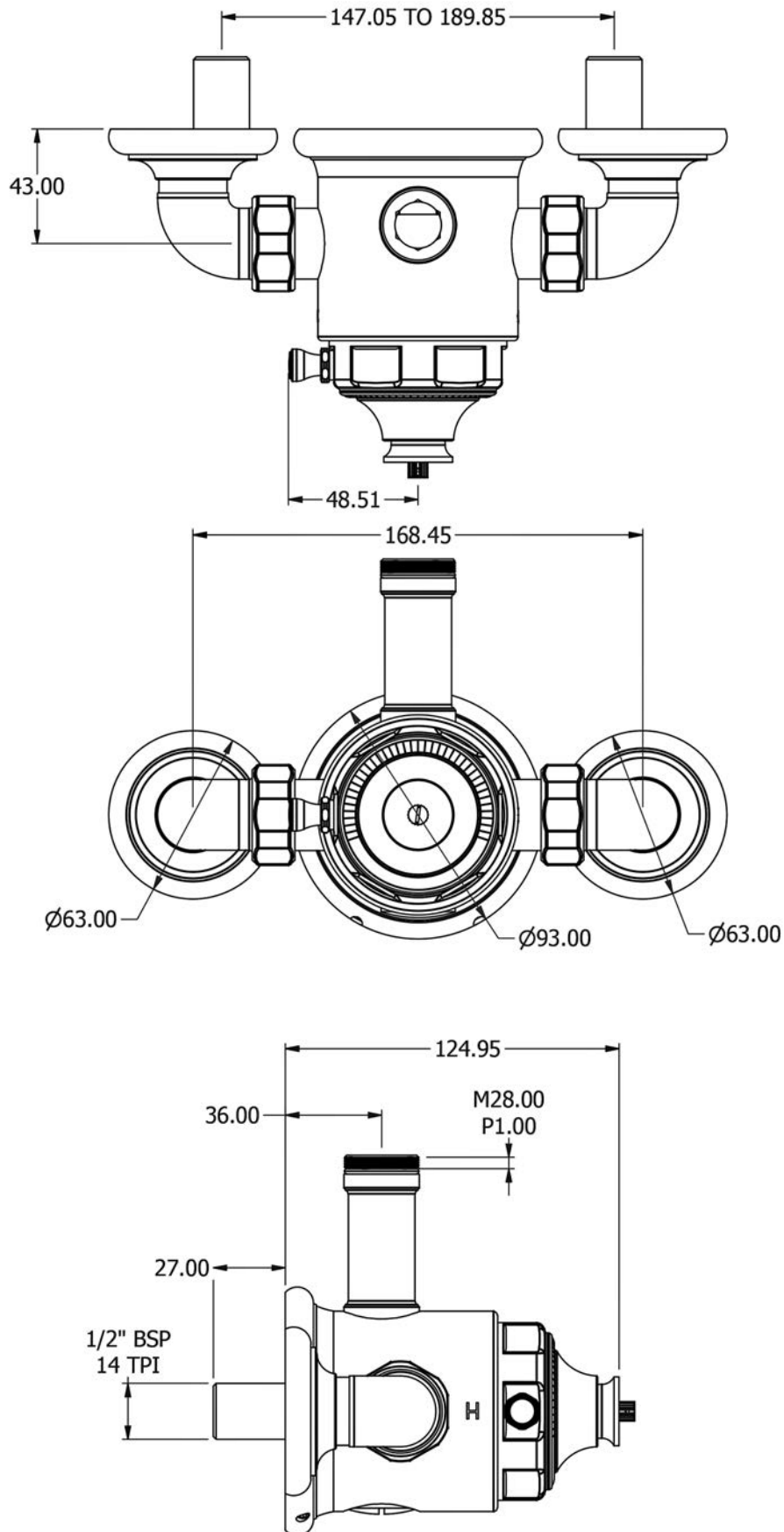
SHO-BRO-EXP-HDS (VCS2K6) Exposed 1/2" thermostatic shower set metal lever - 200mm rose





Claybrook.

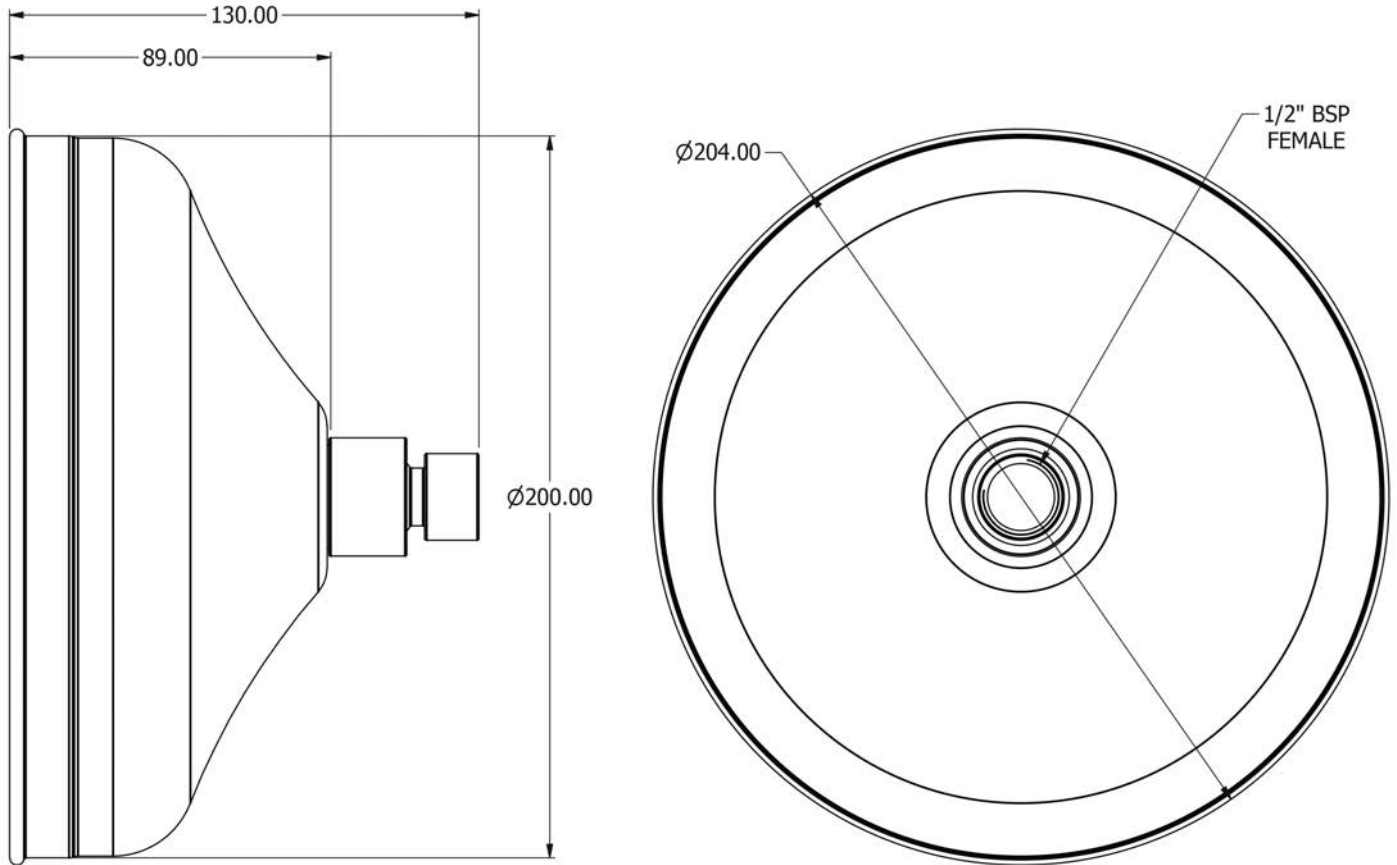
VCS240



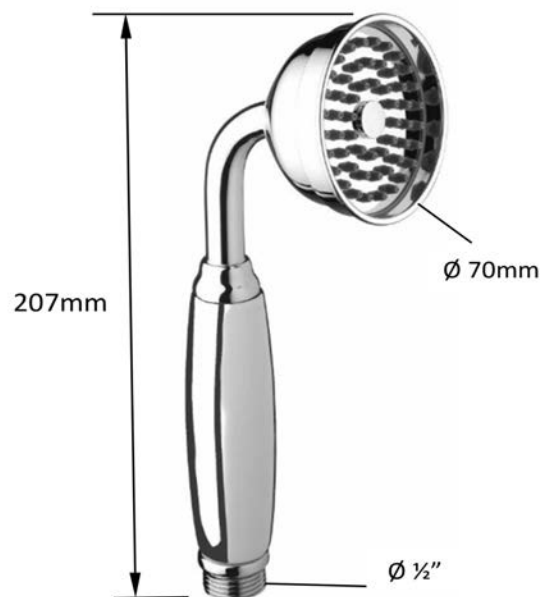


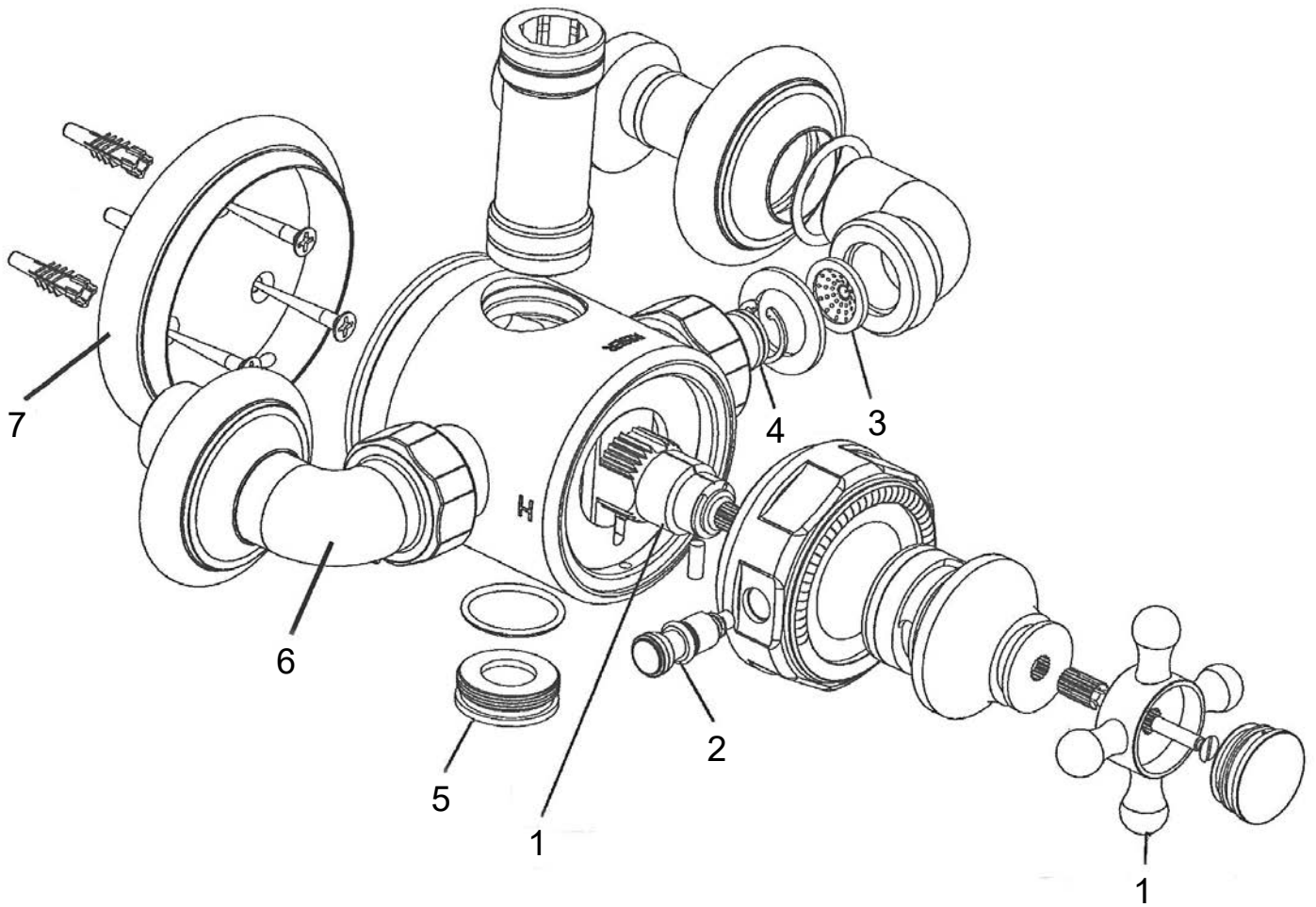
Claybrook.

VCS909



VCS254M

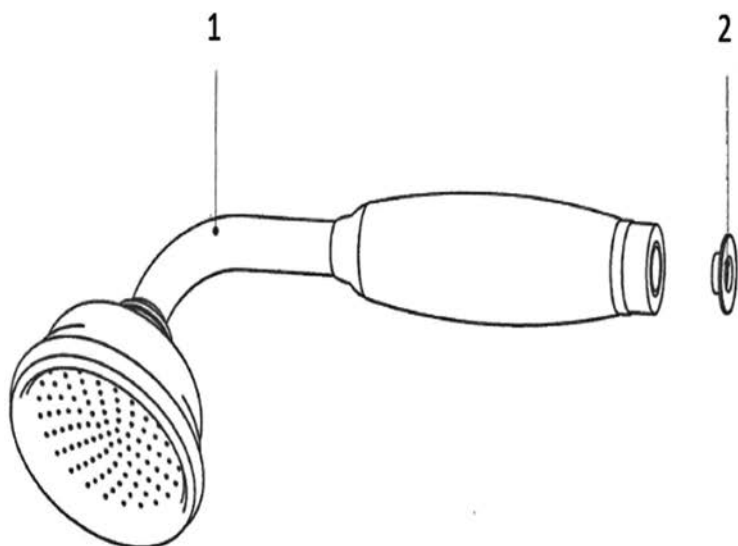




Item	Part No.	Description
1	-	Temperarature Control Handwheel
2	-	Override Button Assembly
3	-	Filter
4	-	Check Valve
5	-	Blanking Plug
6	-	Supply Elbow and Offset Connector
7	-	Backplate

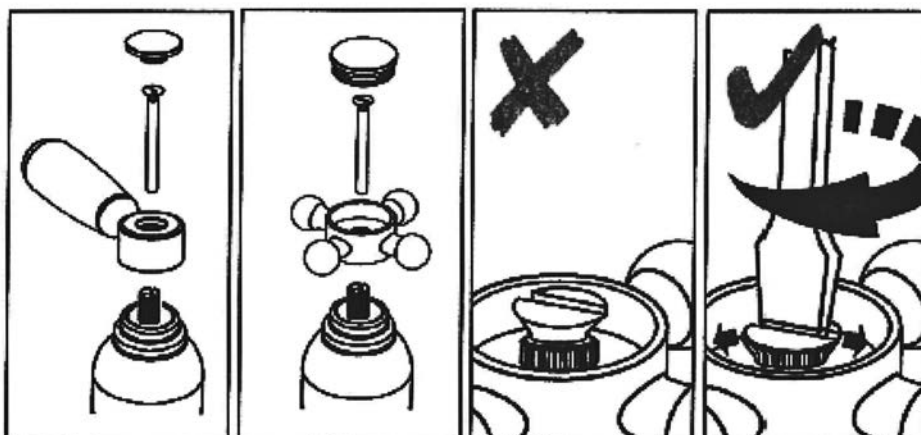


Claybrook.

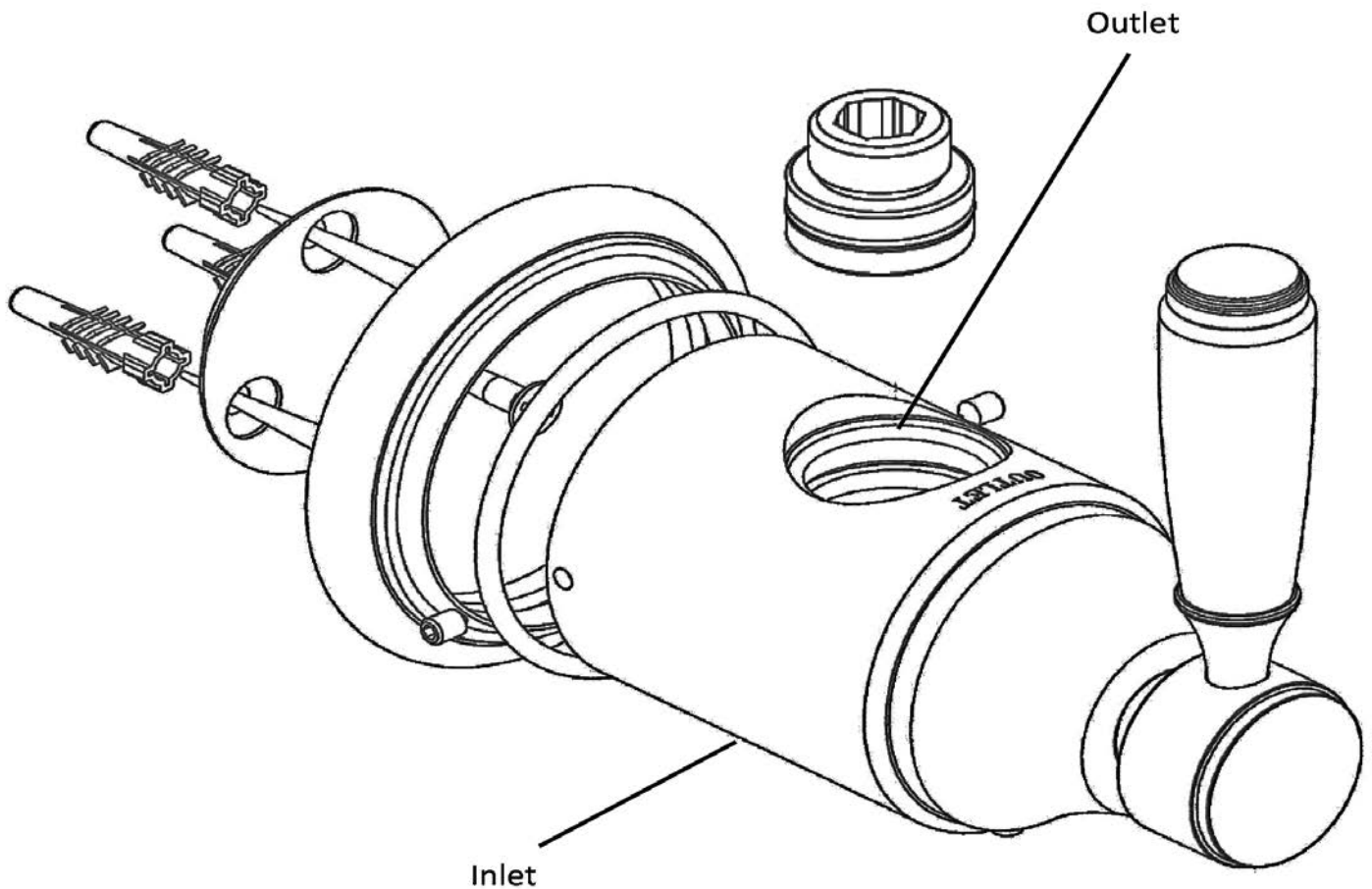


ITEM	DESCRIPTION
1	Handshower assembly
2	Flow regulator

Cross-top/Lever Fitting



Claybrook.



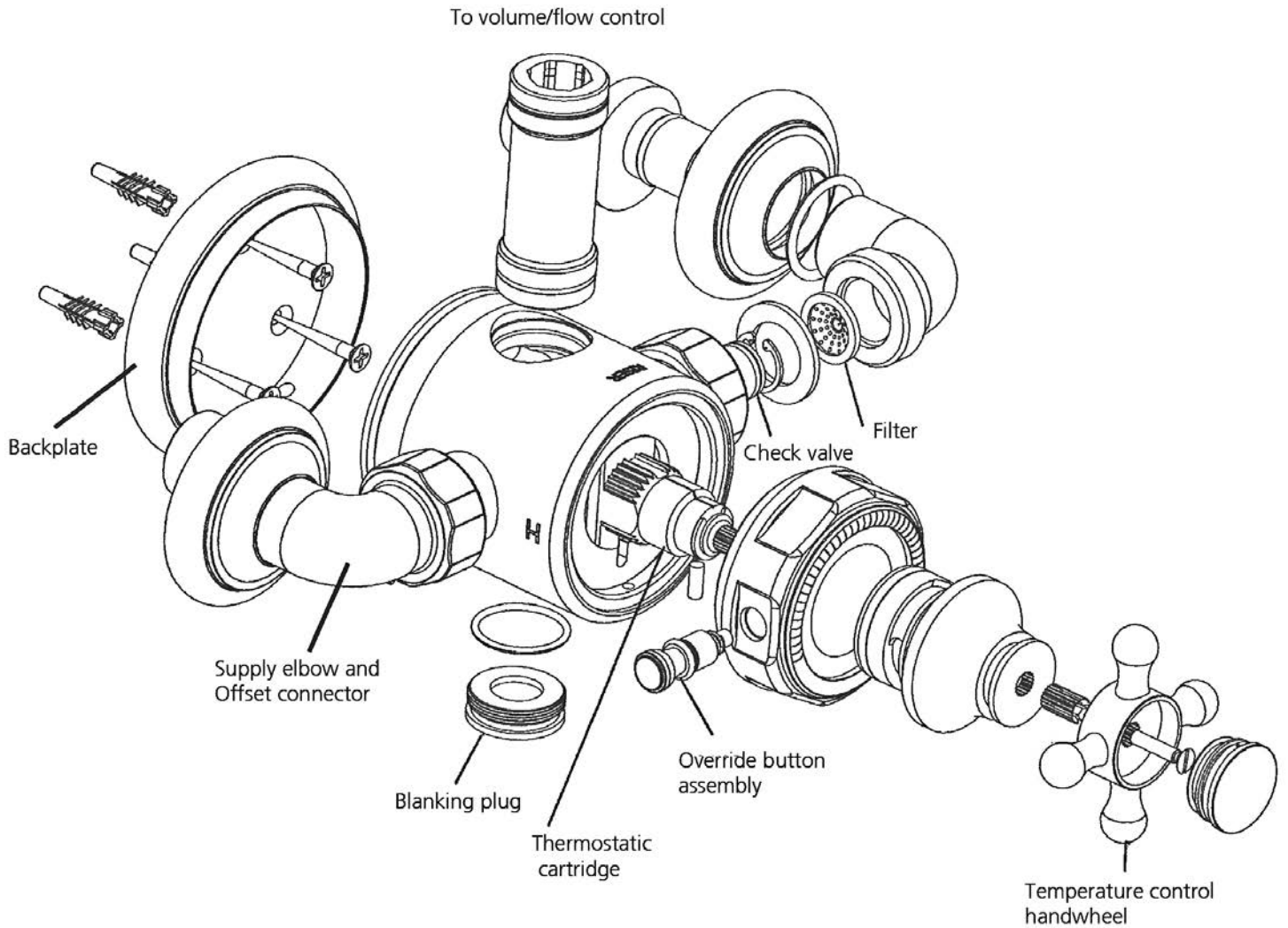
Use the backplate as a template to mark off the fixing holes.

Drill holes then wall plug and screw back plate accordingly.

Fit the volume / flow control back plate by securing grub screws

Installation

VCS240



Use the backplate as a template to mark off the fixing holes.

Drill holes then wall plug and screw backplate accordingly.

Fit valve to backplate by securing grub screws and then supplies (hot on left, cold on right).

Note: Both hot & cold supplies must be flushed thoroughly before installation.



Claybrook.

Remove the valve body from its back plate by releasing the grub screw. Set the valve body back plate at the required height then mark and drill screw holes and fix the back plate.

Fit both supply elbows to the valve then offer the valve to the back plate to allow you to mark off the supply lines.

Fit the riser extension to the valve body, ensuring the O-ring is well lubricated (spares included).

Torque into place using a 5/8" hex key. Fit the volume control including its back plate to the riser extension.

With the valve body fitted to its back plate, mark around the volume control back plate (thus achieving a template) then remove the valve body, direct coupler and volume control complete.

Remove the volume control back plate by releasing the grub screw and place the volume control back plate to your template then mark off and drill the back plate fixing holes before fitting the back plate to the wall.

Secure both the valve body and the volume control to their back plates by tightening the grub screws. Then tighten all supply connections.

Fit riser to volume control body marking off, drilling and fixing riser bracket at the desired height.

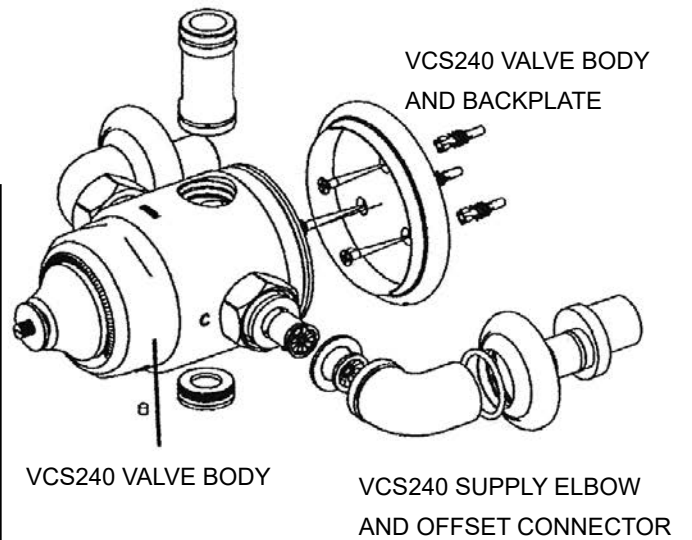
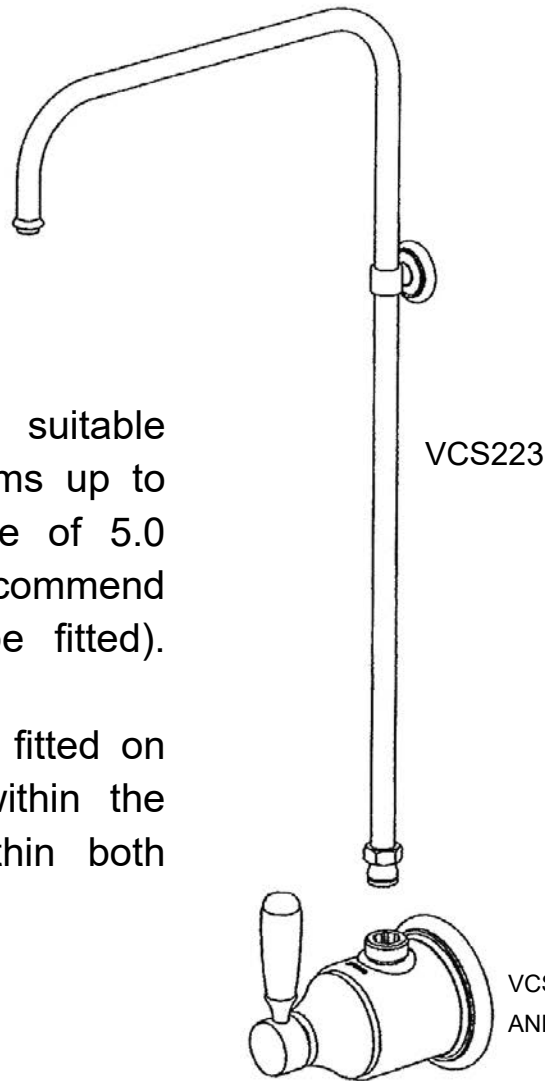
The temperature of the valve is factory set at approximately 43oC. To fitting the lever or cross top control to the unit simply locate the central screw through the lever or cross top into the spline adaptor and ease onto the spline and replace the cover.



Additional Information

The thermostatic valve is suitable for use with all water systems up to maximum operating pressure of 5.0 Bar, (beyond which we recommend pressure reducing valves be fitted).

The valve has check valves fitted on both hot and cold inlets within the valve. Filters are fitted within both supply elbows.

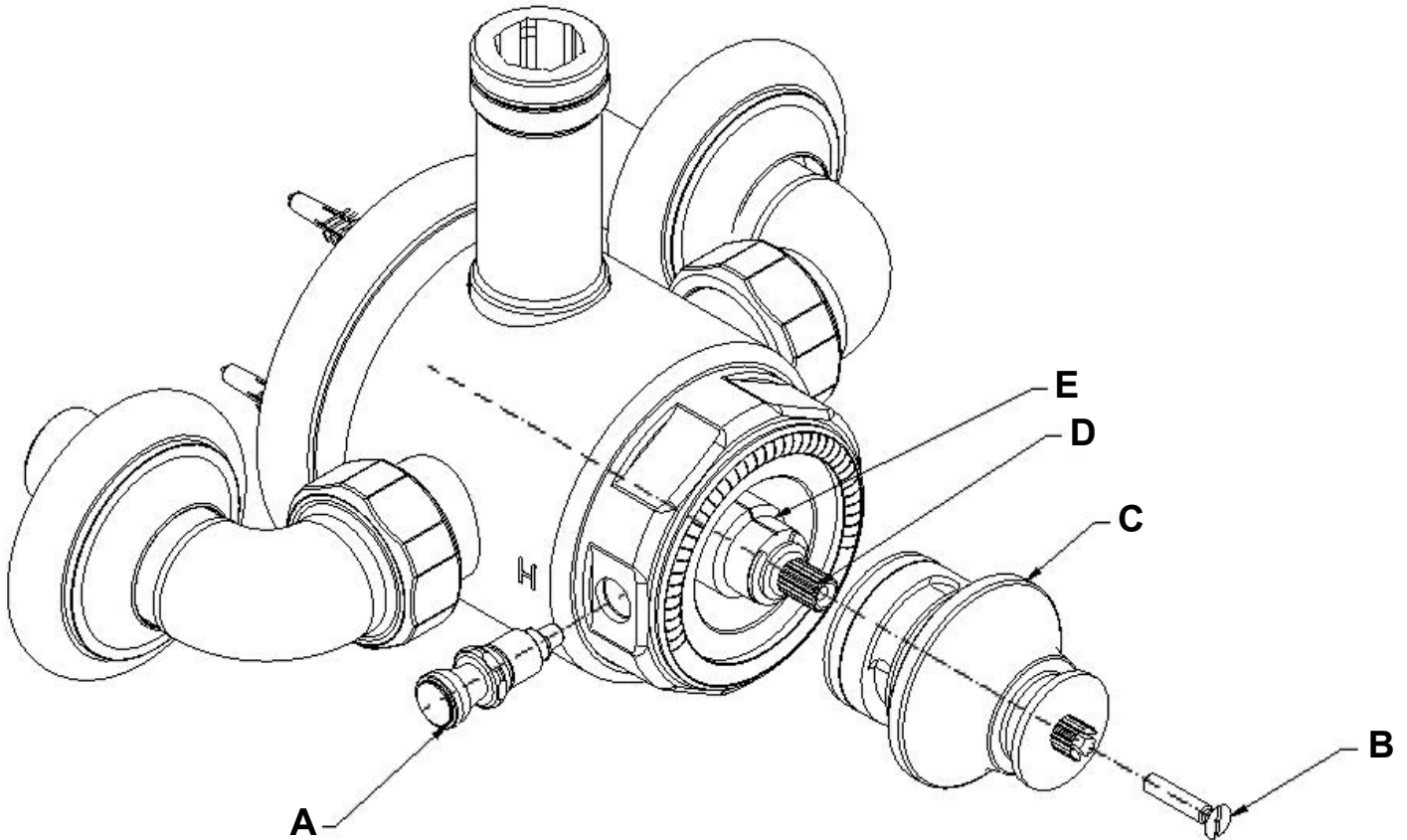


Important
 It is essential that both hot and cold supply lines are thoroughly flushed before installation.

 In hard water areas it is recommended that a suitable water filtration unit be fitted.

Claybrook.

VCS240 TEMPERATURE ADJUSTMENT METHOD



1. Undo the temperature override nut "A"
2. Remove the countersunk screw "B"
3. Pull out the centre stem "C"

MAKE SURE IT IS RE-ASSEMBLED IN THE SAME ORIENTATION

4. Rotate the splined spindle "D" on the cartridge "E" anti-clockwise to increase the temperature.

To re-assemble, reverse steps 1 - 4.

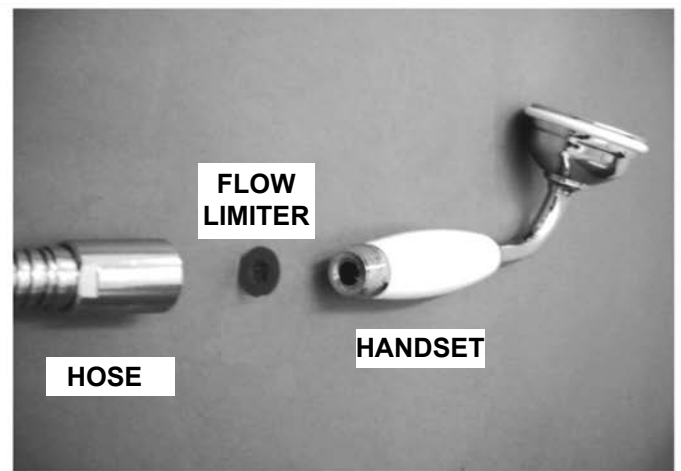


Claybrook.

ASSEMBLE HAND SET DIRECT TO SHOWER HOSE

Insert flow limiter into hose connector & screw hand set to hose connector .

PTFE tape may needed to be placed around thread of hand set to ensure alignment when assembled.



CARE & MAINTENANCE

VCS909/VCS254 HAND SHOWER/SHOWER ROSE

Your shower head/hand shower should be cleaned on a regular basis. Allowing lime scale/debris build up will impede the shower head/hand shower effectiveness. With the "easy clean" rose the cleaning procedure entails simply rubbing the palm of one's hand across the rubber nozzles, freeing any lime scale/debris, this can then be cleaned off by using a damp cloth.

Care should be taken when cleaning the "easy clean" rose as excessive force may damage the rubber nozzles.

With a standard shower head the water dispersal holes should be cleaned by gently clearing the holes, a suitably sized needle will be ideal for this procedure and allow the lime scale/debris to be dislodged with ease, before then cleaned off by using a damp cloth. In hard water areas it will be necessary to carry out these procedures on a regular basis but will mean that this product will operate at its optimum level for many years.



Claybrook.

IMPORTANT NOTES

1. Installation should be carried out by a competent engineer, in accordance with water regulations.
2. Before installation, ensure supply pipes are flushed clean. Debris or loose particles will affect the efficiency of the ceramic disc cartridge.
3. For mixer taps, it is recommended that hot & cold pressures are equally balanced.
4. To help maintain the high quality finish, please clean with a soft damp cloth. Do not use abrasive polish or cleaners. Stains may be removed using undiluted washing up liquid.
5. Ceramic cartridges in hard water areas. To prolong the lifespan and reduce servicing periods of your tap we recommend that a suitable water softener be fitted. Consult your installer/designer for details.
6. Please note that as with all tap and shower ware it will be necessary from time to time for the products to be serviced, this should be carried out by a qualified Plumbing Engineer.

**Claybrook
123 Curtain Road
Shoreditch
London
EC2A 3BX**

Tel: 020 7052 1555

8-40128-CS